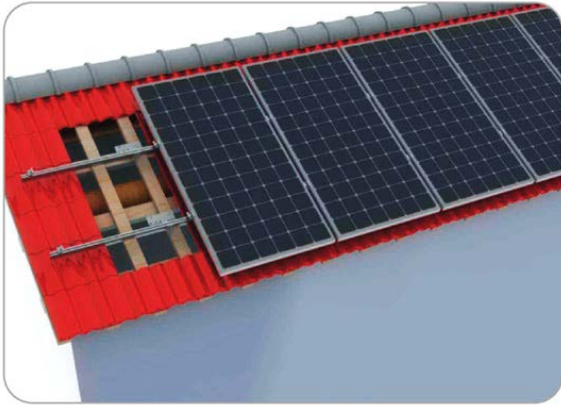




PHOTOVOLTAIC SOLAR ENERGY

MOUNTING - ROOF - SLOPING - TILE SAVER - SI-ESF-S-CIS



DESCRIPTION

- ✓ Place of installation: sloping roof
- ✓ Frame of the module: depending on the order
- ✓ Height: depending on the order
- ✓ Maximum wind load: 150 km/h
- ✓ Maximum snow load: 1.4 kN/m²
- ✓ Module type: with frame or frameless
- ✓ Module Orientation: horizontal or vertical
- ✓ Module size: any
- ✓ Material: depending on the order
- ✓ Warranty: 15 years

CERTIFICATES

Our production facilities have been prepared in accordance with the provisions of the Guidelines:

- ✓ ISO 9001:2008, in terms of Quality Management Systems..
- ✓ ISO 14001:2004, in terms of Environmental Management System.
- ✓ OHSAS 18001:2007, in terms of Occupational Health and Safety Management Systems.

