



looking for the future



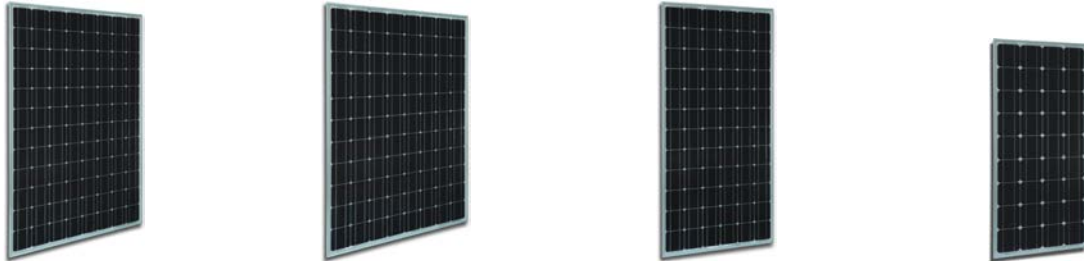
**STANDARD
PV PANELS
PACKING AND
TRANSPORT
SOLUTION**



STANDARD PACKING AND TRANSPORT SOLUTION

1.- STANDARD PHOTOVOLTAIC PANELS

MONOCRYSTALLINE



MONOCRYSTALLINE 5" (125 x 125 mm)		
Type	Size (mm)	Size (inches)
SI-ESF-M-M125-36	1195 x 541 x 35	
SI-ESF-M-M125-72	1580 x 808 x 40	
SI-ESF-M-M125-88	1455 x 1069 x 40	
SI-ESF-M-M125-96	1580 x 1069 x 45	



MONOCRYSTALLINE 6" (156 x 156 mm)		
Type	Size (mm)	Size (inches)
SI-ESF-M-M156-36	1482 x 676 x 40	
SI-ESF-M-M156-48	1324 x 992 x 40	
SI-ESF-M-M156-54	1482 x 992 x 40	
SI-ESF-M-M156-60	1655 x 992 x 40	
SI-ESF-M-M156-66	1813 x 992 x 45	
SI-ESF-M-M156-72	1956 x 992 x 45	



STANDARD PACKING AND TRANSPORT SOLUTION

POLYCRYSTALLINE



POLYCRYSTALLINE 125 x 125 mm (5")		
Reference	Size (mm)	Size (inches)
SI-ESF-M-P125-36	1195 x 541 x 35	
SI-ESF-M-P125-48	1580 x 808 x 40	
SI-ESF-M-P125-54	1455 x 1069 x 40	
SI-ESF-M-P125-72	1580 x 1069 x 45	
SI-ESF-M-P125-88	1195 x 541 x 35	
SI-ESF-M-P125-96	1580 x 808 x 40	



POLYCRYSTALLINE 6" (156 x 156 mm)		
Reference	Size (mm)	Size (inches)
SI-ESF-M-P156-36	1482 x 676 x 40	
SI-ESF-M-P156-48	1324 x 992 x 40	
SI-ESF-M-P156-54	1482 x 992 x 40	
SI-ESF-M-P156-60	1655 x 992 x 40	
SI-ESF-M-P156-66	1813 x 992 x 45	
SI-ESF-M-P156-72	1956 x 992 x 45	



STANDARD PACKING AND TRANSPORT SOLUTION

2.- FLASH REPORT

Each test report is delivered in a computer readable file (.xls), and contains the following information:

INFORME DE ENSAYO FLASH TEST										
Factura Proforma Número: XXX										
Número Contenedor: XXX					Palé Número: XXX					
Tamaño Módulo: X x X x X mm					Cantidad: XXX unidades					
Potencia Media: XXX					Potencia Total: XXX W					
Nº. Serie	Pmpp	Vmpp	Impp	Voc	Eff (ηm)	FF	Rsh	Rs	Temp	Datetime
	Wp	(V)	(A)	(V)	%	%	(Ω)	(Ω)	(° C)	



3.- LABEL

Each module have attached to the back an identifying label with all the technical features of it.



4.- BAR CODE

Each module has a label with the barcode on the front (inside the laminate) and another in the back next to the marking label.



Each numbered pallet contains a waterproof poly-bag attached on the side of the carton box with the bar codes of the modules in order to facilitate stock management.





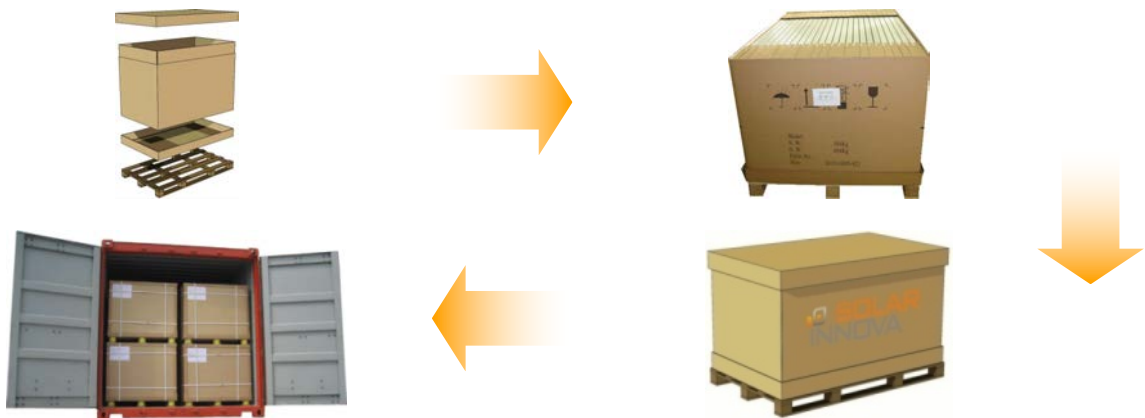
STANDARD PACKING AND TRANSPORT SOLUTION

5.- PACKING

We design the packaging of our modules to ensure the best protection during transport them to their final destination.

Our packaging is fully recyclable and are calculated for safe transport in order to avoid mechanical damage during transport, which may cause further declines in performance.

Solar Innova takes care of all the logistics for end users ensuring full traceability of the modules.





STANDARD PACKING AND TRANSPORT SOLUTION

6.- TRANSPORT



CONTAINER 20'GP FCL: 20' x 8' x 8'6" (5.898 x 2.352 x 2.393 m)						
Type	Pieces/Pallet	Pallet Size (mm)	Net Weight (kg/pallet)	Gross Weight (kg/pallet)	Pallets	Pieces
Monocrystalline 5" (125 x 125 mm)						
SI-ESF-M-M125-36	28	1250 x 1150 x 700	224	314	24	672
SI-ESF-M-M125-48	28	1250 x 1150 x 700	224	314	24	672
SI-ESF-M-M125-54	28	1250 x 1150 x 700	224	314	24	672
SI-ESF-M-M125-72	24 (down ctn.)	1625 x 1150 x 970	388	501	6+6	312
	28 (up ctn.)	1625 x 1150 x 1153	450	556		
SI-ESF-M-M125-88	40	1510 x 1150 x 2110	680	825	7	280
SI-ESF-M-M125-96	38	1625 x 1150 x 2100	950	1095	6	228
Monocrystalline 6" (156 x 156 mm)						
SI-ESF-M-M156-36	24 (down ctn.)	1550 x 1150 x 840	288	378	7+7	406
	34 (up ctn.)	1550 x 1150 x 1325	408	558		
SI-ESF-M-M156-54	40	1550 x 1150 x 2120	700	860	7	280
SI-ESF-M-M156-60	40	1700 x 1150 x 2140	800	965	6	240
SI-ESF-M-M156-66	40	1700 x 1150 x 2140	800	965	6	240
SI-ESF-M-M156-72	37	2000 x 1150 x 2130	1073	1203	5	185
Polycrystalline 5" (125 x 125 mm)						
SI-ESF-M-M125-36	28	1250 x 1150 x 700	224	314	24	672
SI-ESF-M-P125-48	28	1250 x 1150 x 700	224	314	54	1512
SI-ESF-M-P125-54	28	1250 x 1150 x 700	224	314	54	1512
SI-ESF-M-P125-72	24 (down ctn.)	1625 x 1150 x 970	388	501	6+6	312
	28 (up ctn.)	1625 x 1150 x 1153	450	556		
SI-ESF-M-P125-88	40	1510 x 1150 x 2110	680	825	7	280
SI-ESF-M-P125-96	38	1625 x 1150 x 2100	950	1095	6	228
Polycrystalline 6" (156 x 156 mm)						
SI-ESF-M-P156-36	24 (down ctn.)	1550 x 1150 x 840	288	378	7+7	406
	34 (up ctn.)	1550 x 1150 x 1325	408	558		
SI-ESF-M-P156-48	44	1385 x 1150 x 2120	660	795	8	352
SI-ESF-M-P156-54	40	1550 x 1150 x 2120	700	860	7	280
SI-ESF-M-P156-60	40	1700 x 1150 x 2140	800	965	6	240
SI-ESF-M-P156-66	40	1865 x 1150 x 2140	960	1125	6	240
SI-ESF-M-P156-72	37	2000 x 1150 x 2130	1073	1203	5	185



STANDARD PACKING AND TRANSPORT SOLUTION



CONTAINER 40'GP FCL: 40' x 8' x 8'6" (12.025 x 2.352 x 2.393 m)						
Type	Pieces/Pallet	Pallet Size (mm)	Net Weight (kg/pallet)	Gross Weight (kg/pallet)	Pallets	Pieces
Monocrystalline 5" (125 x 125 mm)						
SI-ESF-M-M125-36	28	1250 x 1150 x 700	224	314	54	1512
SI-ESF-M-M125-48	28	1250 x 1150 x 700	224	314	24	672
SI-ESF-M-M125-54	28	1250 x 1150 x 700	224	314	24	672
SI-ESF-M-M125-72	24 (down ctn.)	1625 x 1150 x 970	388	501	14+14	728
	26 (up ctn.)	1625 x 1150 x 1153	450	525		
SI-ESF-M-M125-88	24	1510 x 1150 x 1254	408	528	30/40' HC	720
SI-ESF-M-M125-96	22	1625 x 1150 x 1230	550	670	28/40' HC	616
Monocrystalline 6" (156 x 156 mm)						
SI-ESF-M-M156-36	24 (down ctn.)	1550 x 1150 x 840	288	378	14+14	812
	34 (up ctn.)	1550 x 1150 x 1325	408	558		
SI-ESF-M-M156-54	22 (down ctn.)	1550 x 1150 x 1150	385	505	14+14/40' HC	672
	26 (up ctn.)	1550 x 1150 x 1350	455	580		
SI-ESF-M-M156-60	48	1700 x 1150 x 2510	960	1210	13/40' HC	624
SI-ESF-M-M156-72	22 (down ctn.)	2000 x 1150 x 1150	638	758	11+11/40' HC	506
	24 (up ctn.)	2000 x 1150 x 1265	696	821		
Polycrystalline 5" (125 x 125 mm)						
SI-ESF-M-P125-36	28	1250 x 1150 x 700	224	314	54	1512
SI-ESF-M-P125-48	28	1250 x 1150 x 700	224	314	54	1512
SI-ESF-M-P125-54	28	1250 x 1150 x 700	224	314	54	1512
SI-ESF-M-P125-72	24 (down ctn.)	1625 x 1150 x 970	388	501	14+14	728
	26 (up ctn.)	1625 x 1150 x 1153	450	525		
SI-ESF-M-P125-88	24	1510 x 1150 x 1254	408	528	30/40' HC	720
SI-ESF-M-P125-96	22	1625 x 1150 x 1230	550	670	28/40' HC	616
Polycrystalline 6" (156 x 156 mm)						
SI-ESF-M-P156-36	24 (down ctn.)	1550 x 1150 x 840	288	378	14+14	812
	34 (up ctn.)	1550 x 1150 x 1325	408	558		
SI-ESF-M-P156-48	24 (down ctn.)	1385 x 1150 x 1150	360	480	16+16/40' HC	832
	28 (up ctn.)	1385 x 1150 x 1329	420	545		
SI-ESF-M-P156-54	22 (down ctn.)	1550 x 1150 x 1150	385	505	14+14/40' HC	672
	26 (up ctn.)	1550 x 1150 x 1350	455	580		
SI-ESF-M-P156-60	48	1700 x 1150 x 2510	960	1210	13/40' HC	624
SI-ESF-M-P156-66	48	1865 x 1150 x 2510	1152	1402	12/40' HC	576
SI-ESF-M-P156-72	22 (down ctn.)	2000 x 1150 x 1150	638	758	11+11/40' HC	506
	24 (up ctn.)	2000 x 1150 x 1265	696	821		