

BIPV Skylight PORCHE-VW CAR DEALER

2022

PV PANEL

SI-ESF-M-BIPV-CT-M156-48-1C

- 4 mm tempered glass
- 0.76 mm PVB layer
- 0.21 mm monocrystalline PV
- 0.76 mm PVB layer
- 4 mm tempered glass
- 12 mm air chamber
- 4 mm tempered glass
- 0.76 mm PVB layer
- 4 mm tempered glass

Composition:



Size: 2300 x 1025 x 35 mm

Weight: 114.25 kg

Matrix: 12 x 4

Transparency: 50%



Panel Power: 245 Wp



Total Power: 49,000 Wp

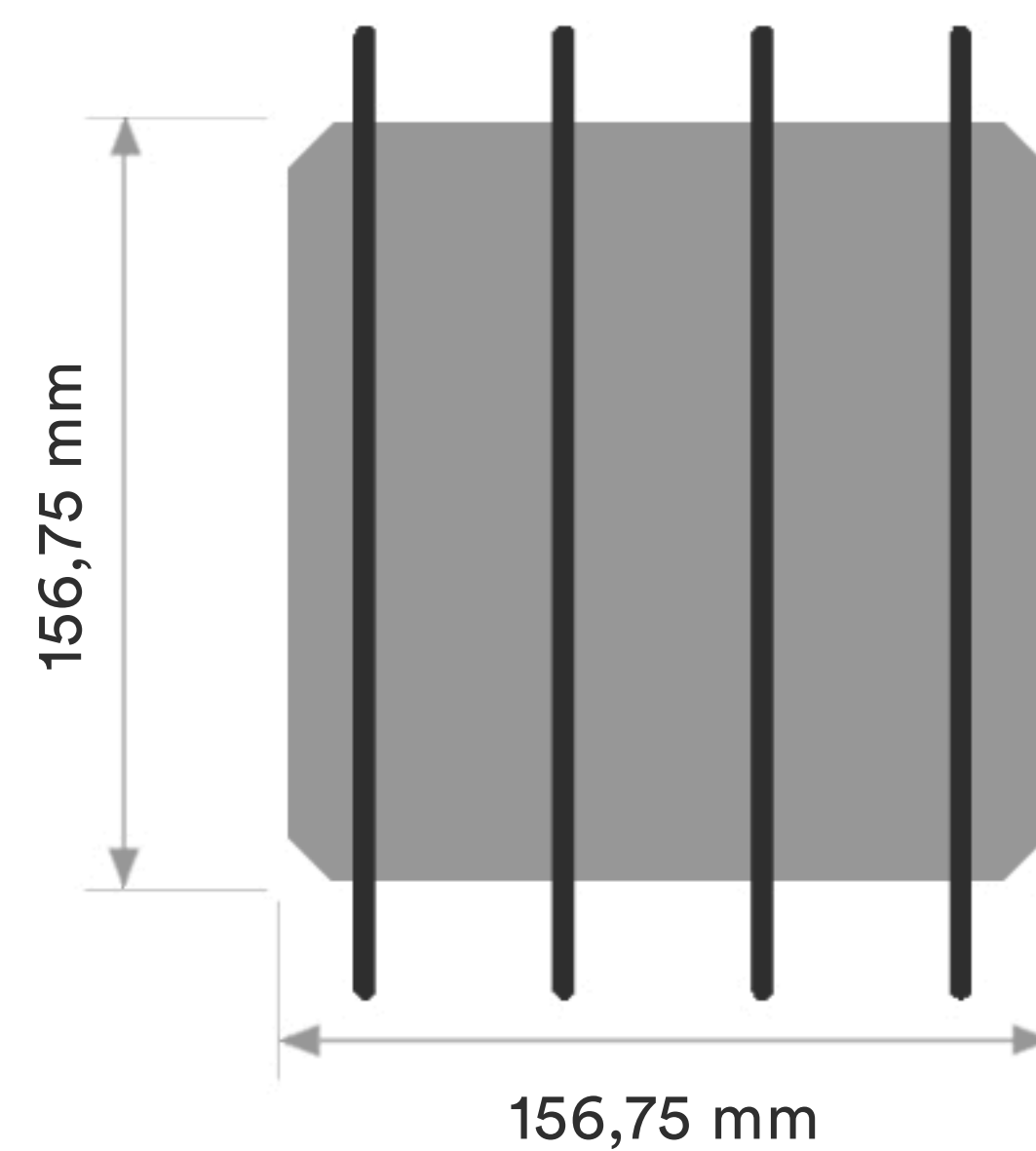
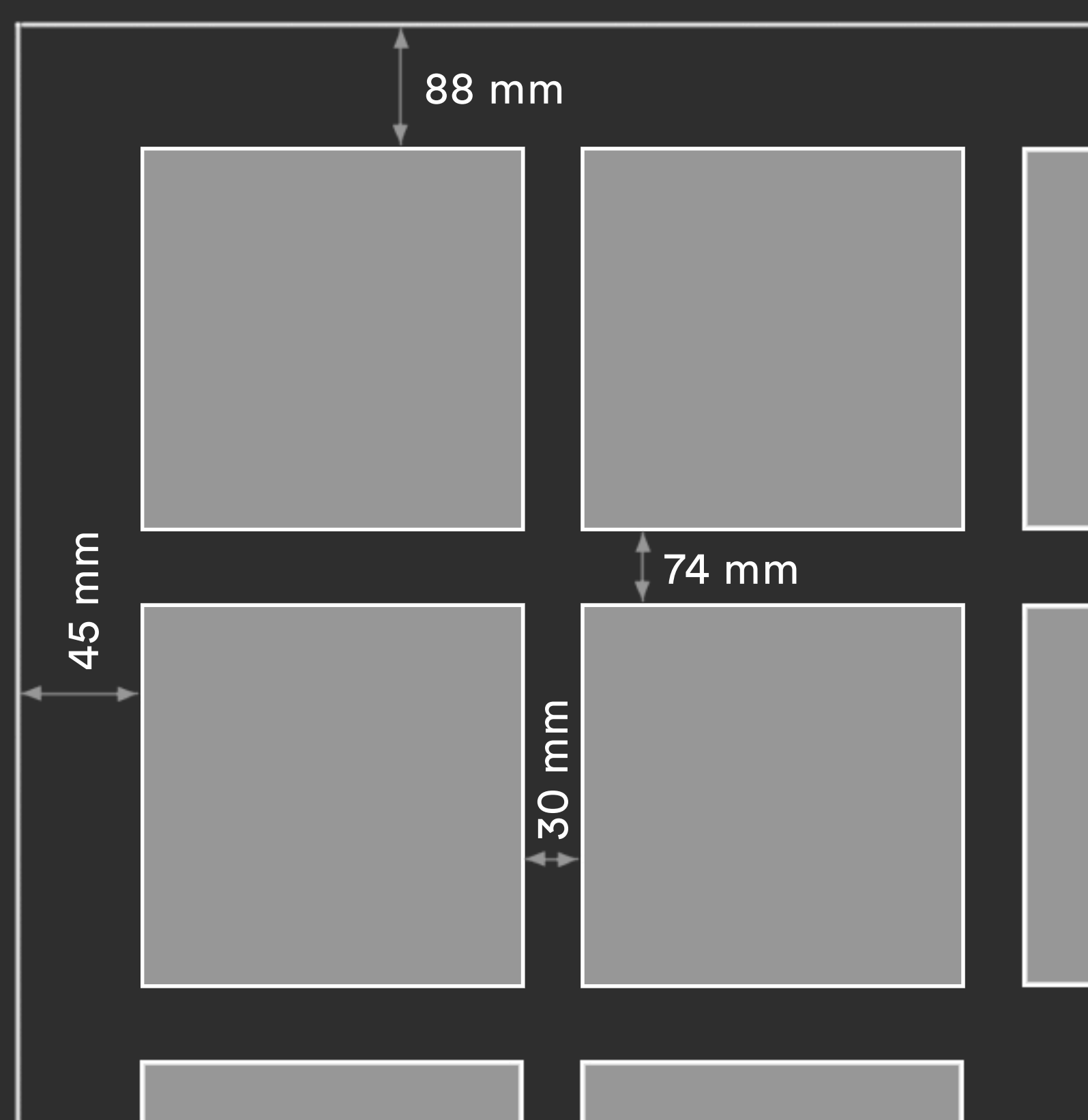
Quantity: 200 pcs

Photovoltaic skylight are an alternative way to transform materials that are normally used in construction in **energetically- active** materials.



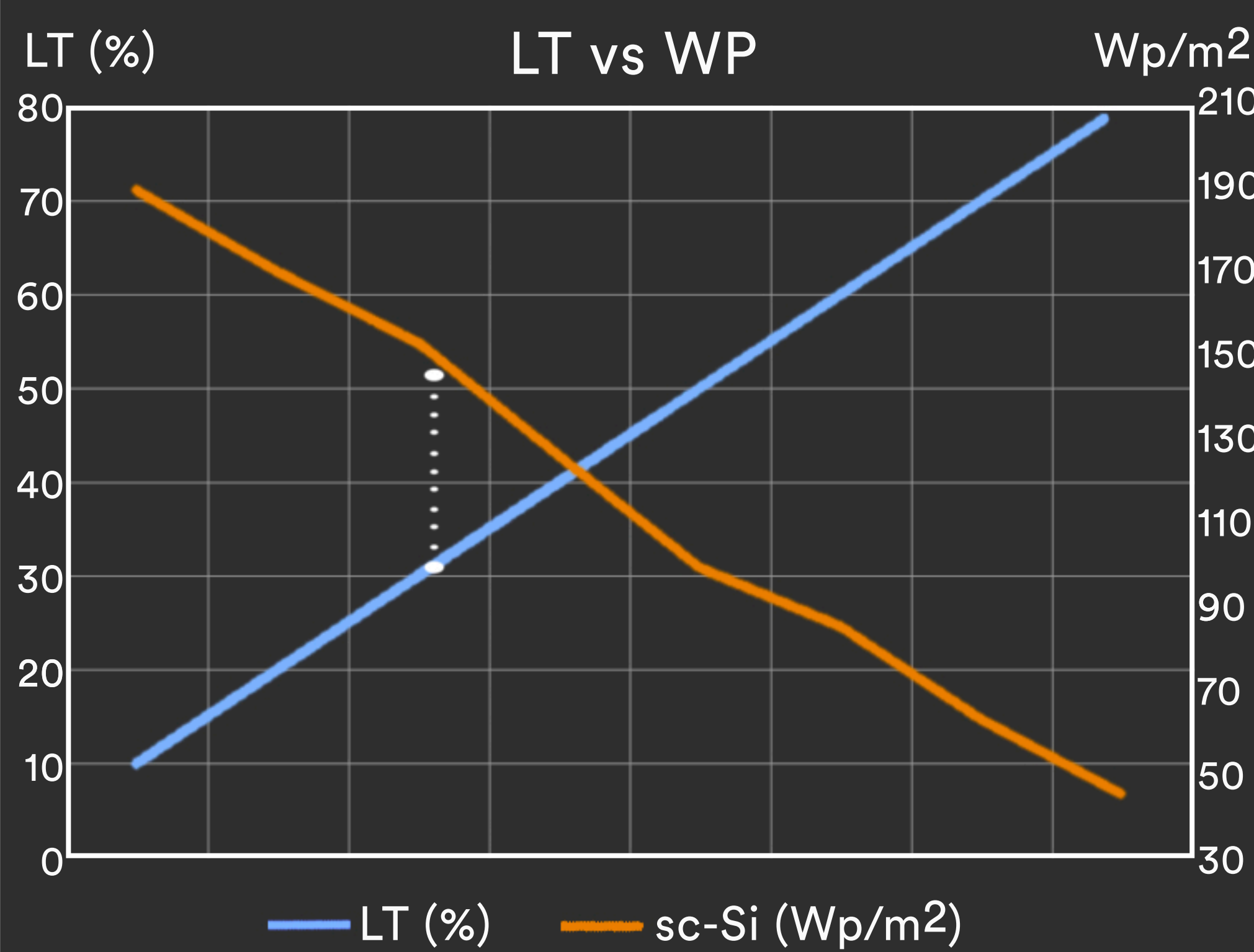
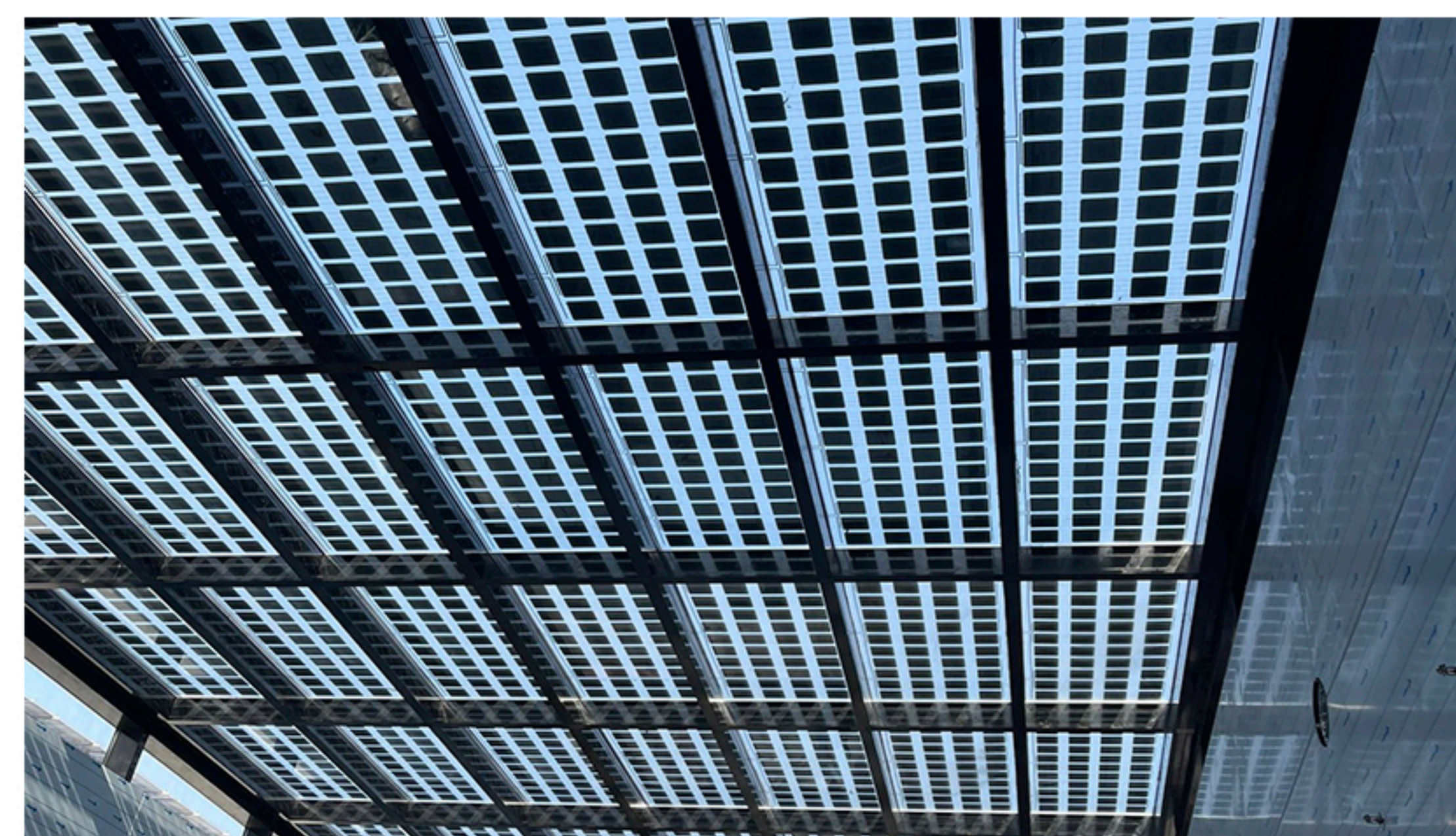
BIPV

One of the great advantages of Solar Innova's architectural integration **photovoltaic** glasses is that they act as a filter for ultraviolet and infrared radiation, both harmful to health, in addition to generating clean and **free energy** thanks to the sun.



- sc-Si PV
- 4bb connection
- high efficiency

Customized size and shape



- ✓ Raising awareness by betting on renewable energy
- ✓ Integration of renewable energy in urban environments
- ✓ Advantage of unused areas
- ✓ Amortization of economic investments

+ Energy + Saving - Outlay - CO₂

CE 2014/35/EU
EN 50583-1
EN 14449

ISO ISO 9001
ISO 14001
ISO 45001

IEC IEC/EN 61215
IEC/EN 61730
IEC/EN 63092

nZEB Nearly
Zero Energy
Buildings

ISO 1064
GHG Protocol

WEEE
2002/96/EC

Fast Return Of
Investment
material

12/25 years
guarantee

Photovoltaic
Architecture

High
satisfaction

Custom
design and
production

Low
degradation