

# BIPV Roof Top Factory

2018

## PV PANEL

SI-ESF-M-BIPV-CT-M156-60

- 6 mm tempered glass  
high-transparency
- 0,76 mm PVB layer
- 0,21 mm monocrystalline PV  
cells 156x156 mm
- 0,76 mm PVB layer
- 6 mm tempered glass

## Composition:



Size: 1500 x 1300 x 14 mm

Weight: 63.36 kg

Matrix: 6 x 7

Transparency: 46%



Panel Power: 265 Wp



Total Power: 217,300 Wp

Quantity: 1200 pcs

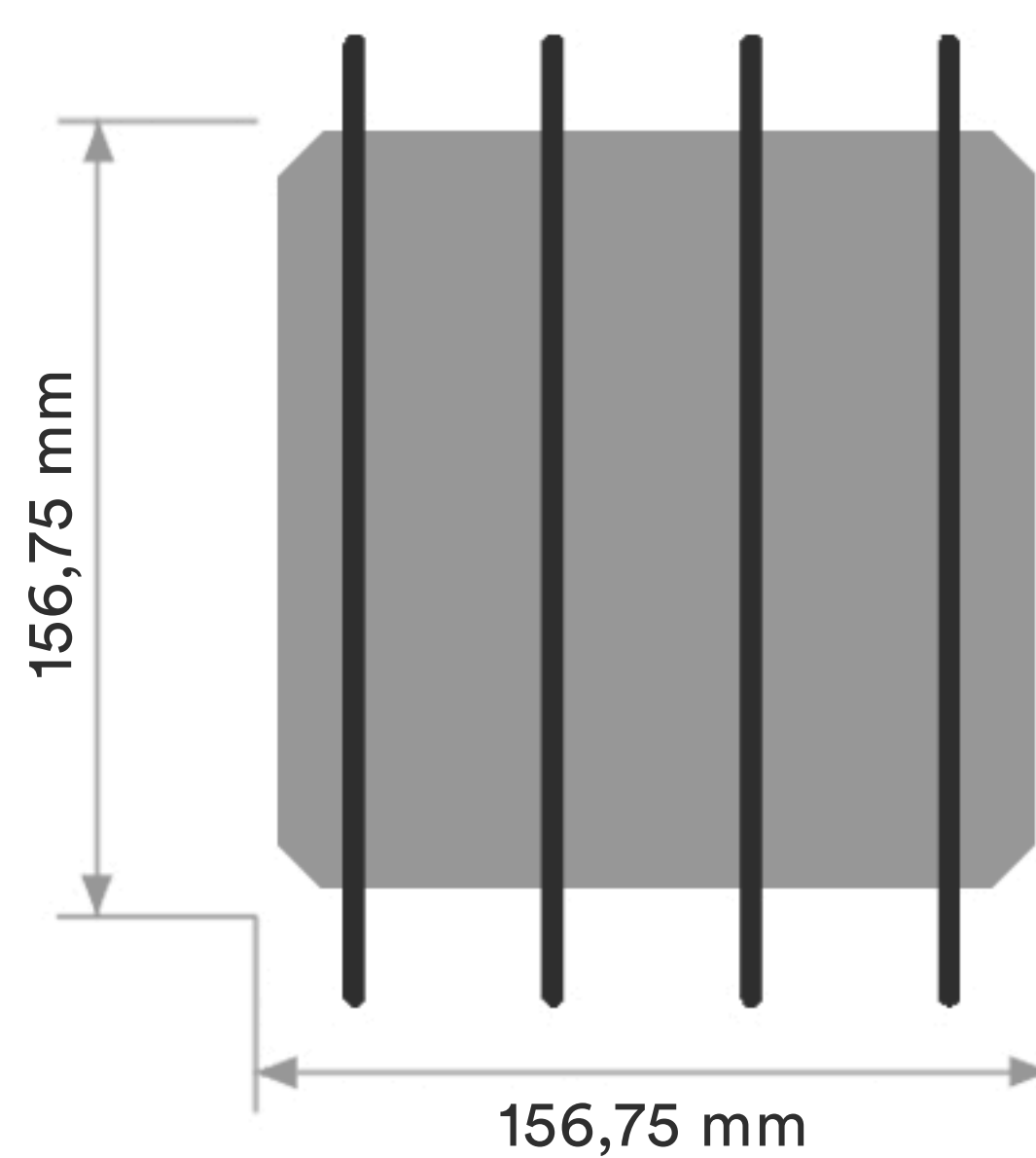
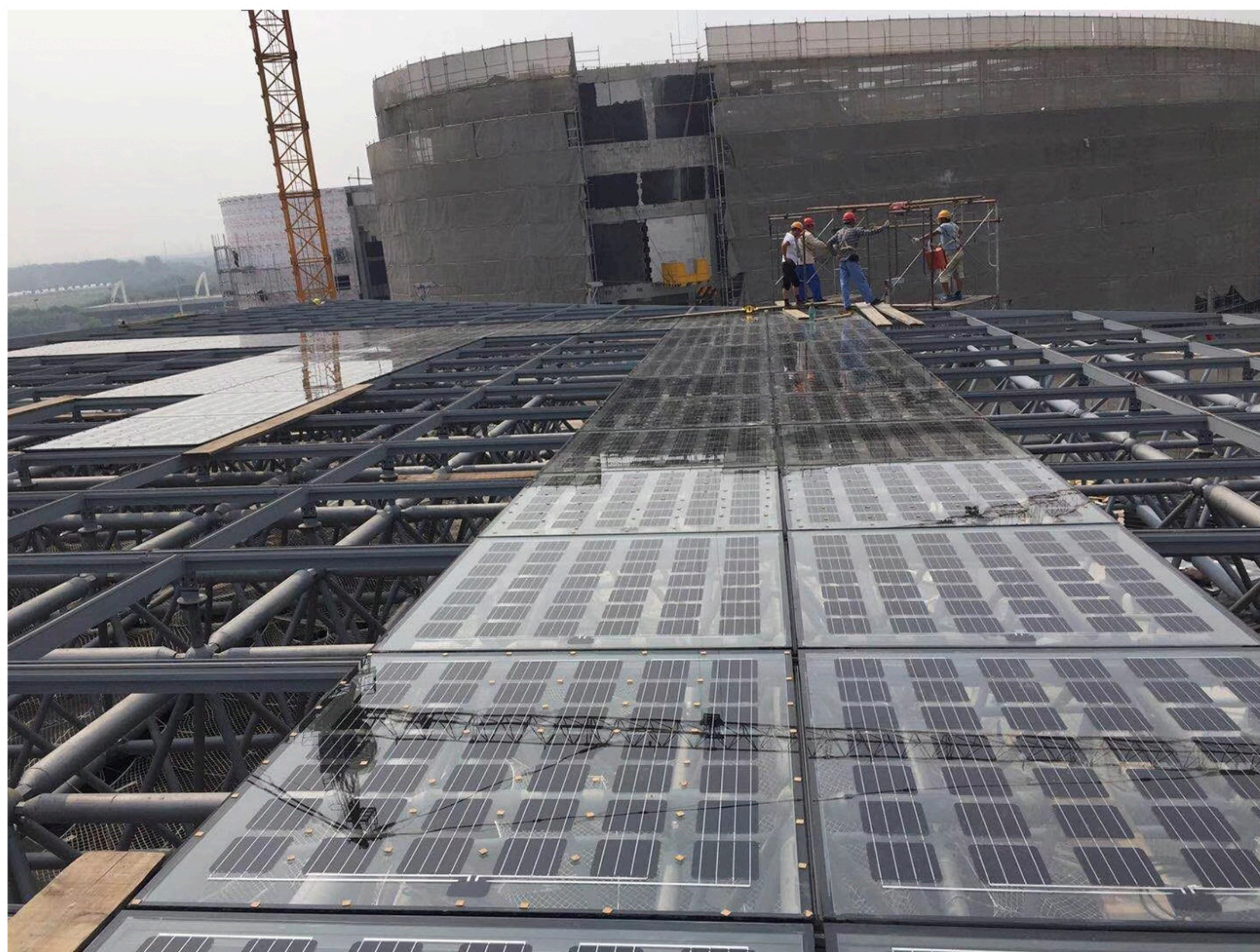
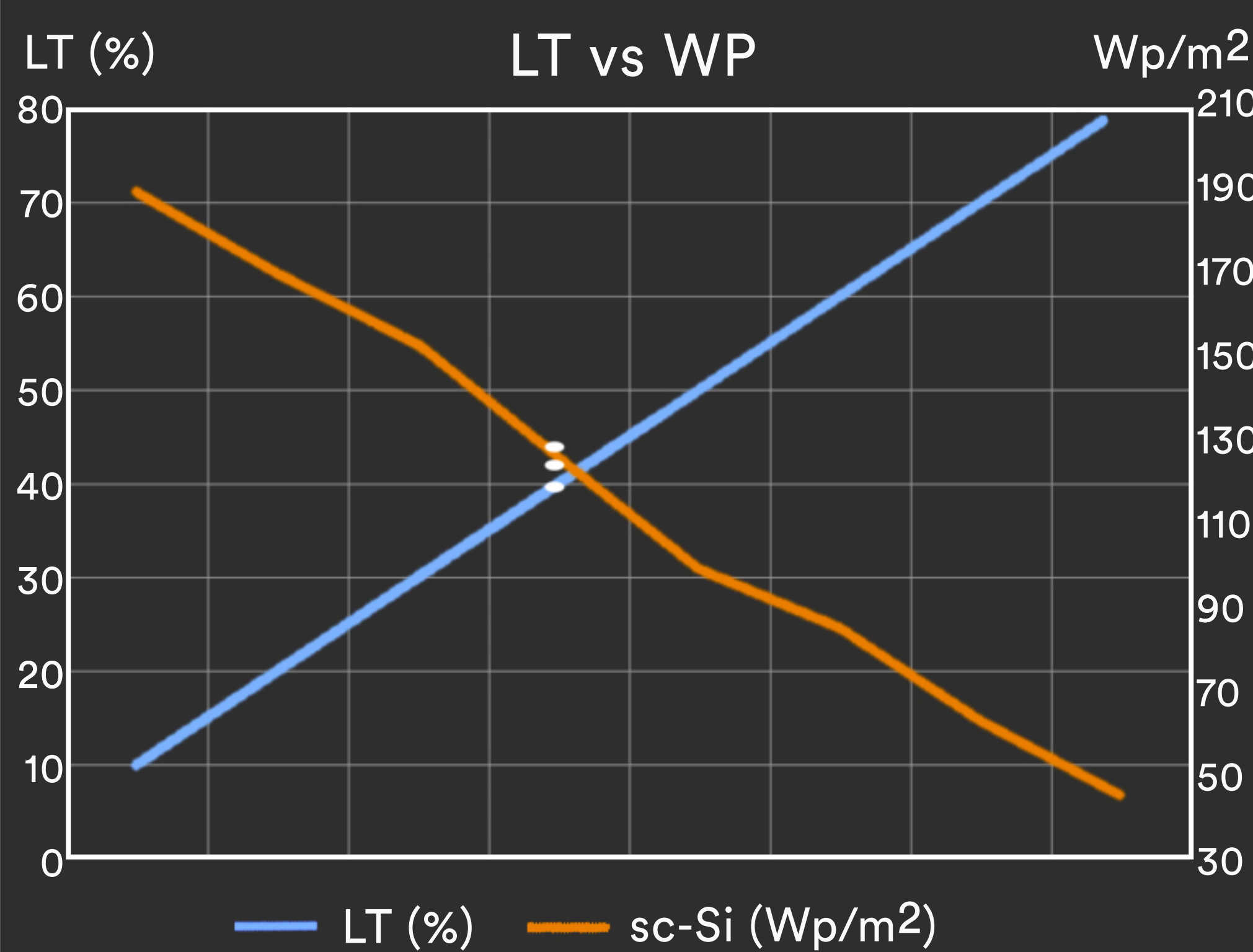
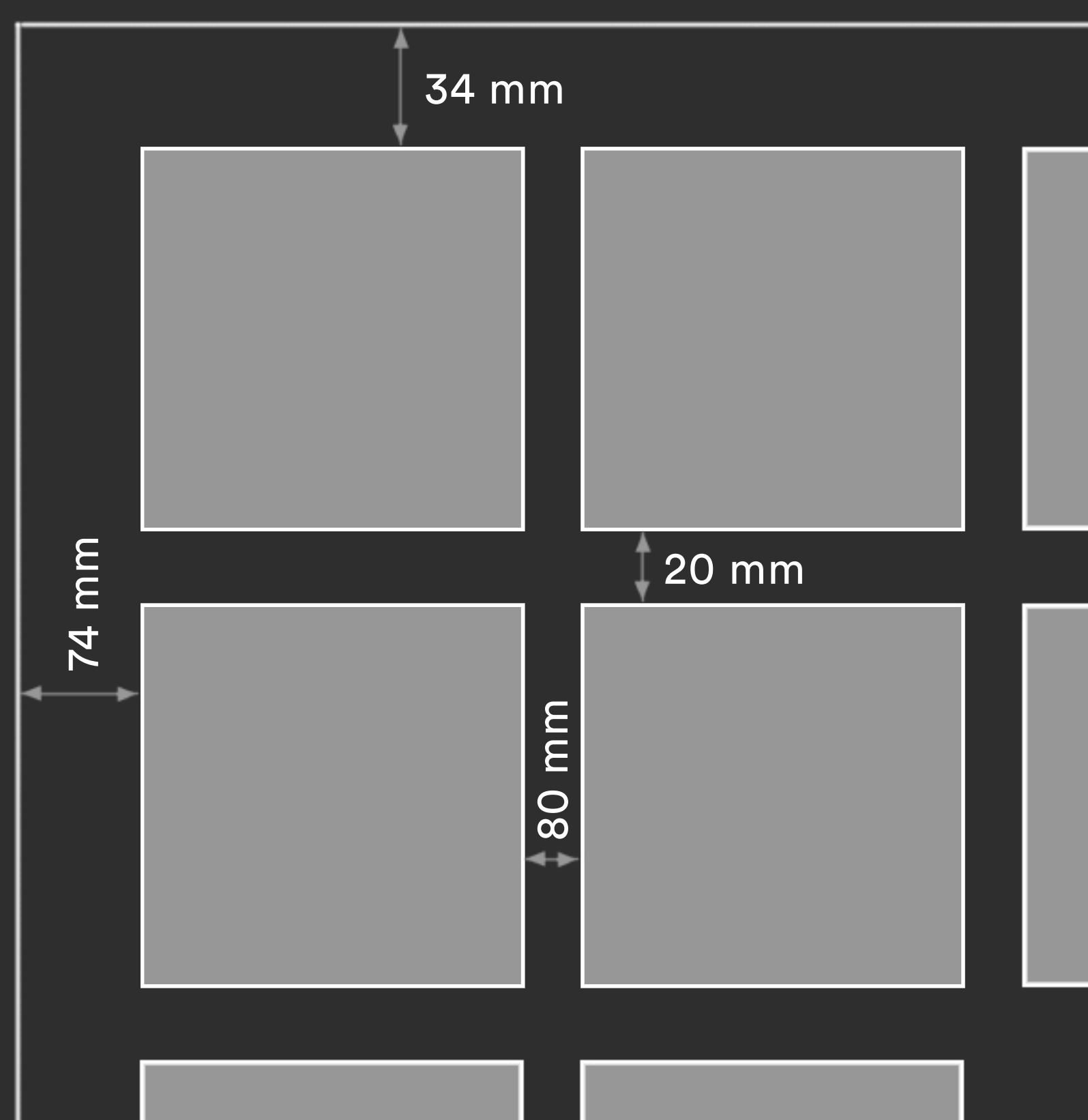
**P**hotovoltaic roof-top are an alternative way to transform materials that are normally used in construction in **energetically-active** materials.





# BIPV

One of the great advantages of Solar Innova's architectural integration **photovoltaic** glasses is that they act as a filter for ultraviolet and infrared radiation, both harmful to health, in addition to generating clean and **free energy** thanks to the sun.



- sc-Si FV
- 4bb connection
- high efficiency

**Customized size and shape**



- ✓ Raising awareness by betting on renewable energy
- ✓ Integration of renewable energy in urban environments
- ✓ Advantage of unused areas
- ✓ Amortization of economic investments

**+ Energy + Saving - Outlay - CO2**



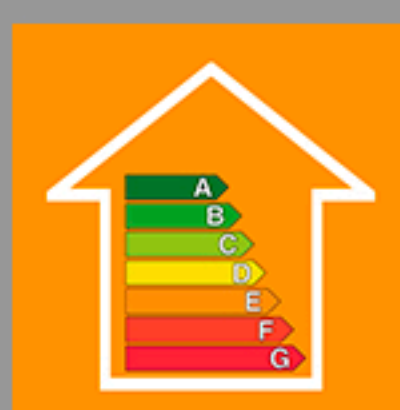
2014/35/EU  
EN 50583-1  
EN 14449



ISO 9001  
ISO 14001  
ISO 45001



IEC/EN 61215  
IEC/EN 61730  
IEC/EN 63092



nZEB Nearly  
Zero Energy  
Buildings



ISO 1064  
GHG Protocol



WEEE  
2002/96/EC



Fast Return Of  
Investment  
material



12/25 years  
guarantee



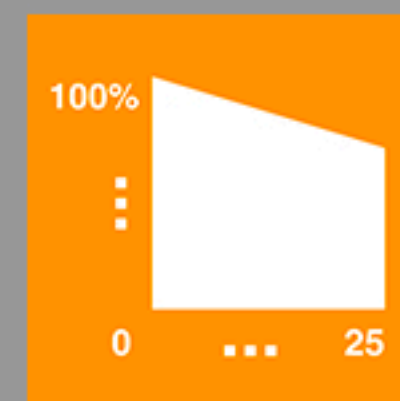
Photovoltaic  
Architecture



High  
satisfaction



Custom  
design and  
production



Low  
degradation