

BIPV Pergolas Jardins Rambla Sants

2016

PV PANEL

SI-ESF-M-BIPV-CT-P156-40

- 6 mm tempered glass
high-transparency
- 0.76 mm PVB layer
- 0.21 mm polycrystalline PV
cells 156x156 mm
- 0.76 mm PVB layer
- 6 mm tempered glass

Composition:



Size: 1600 x 900 x 14 mm

Matrix: 8 x 5

Transparency: 30%



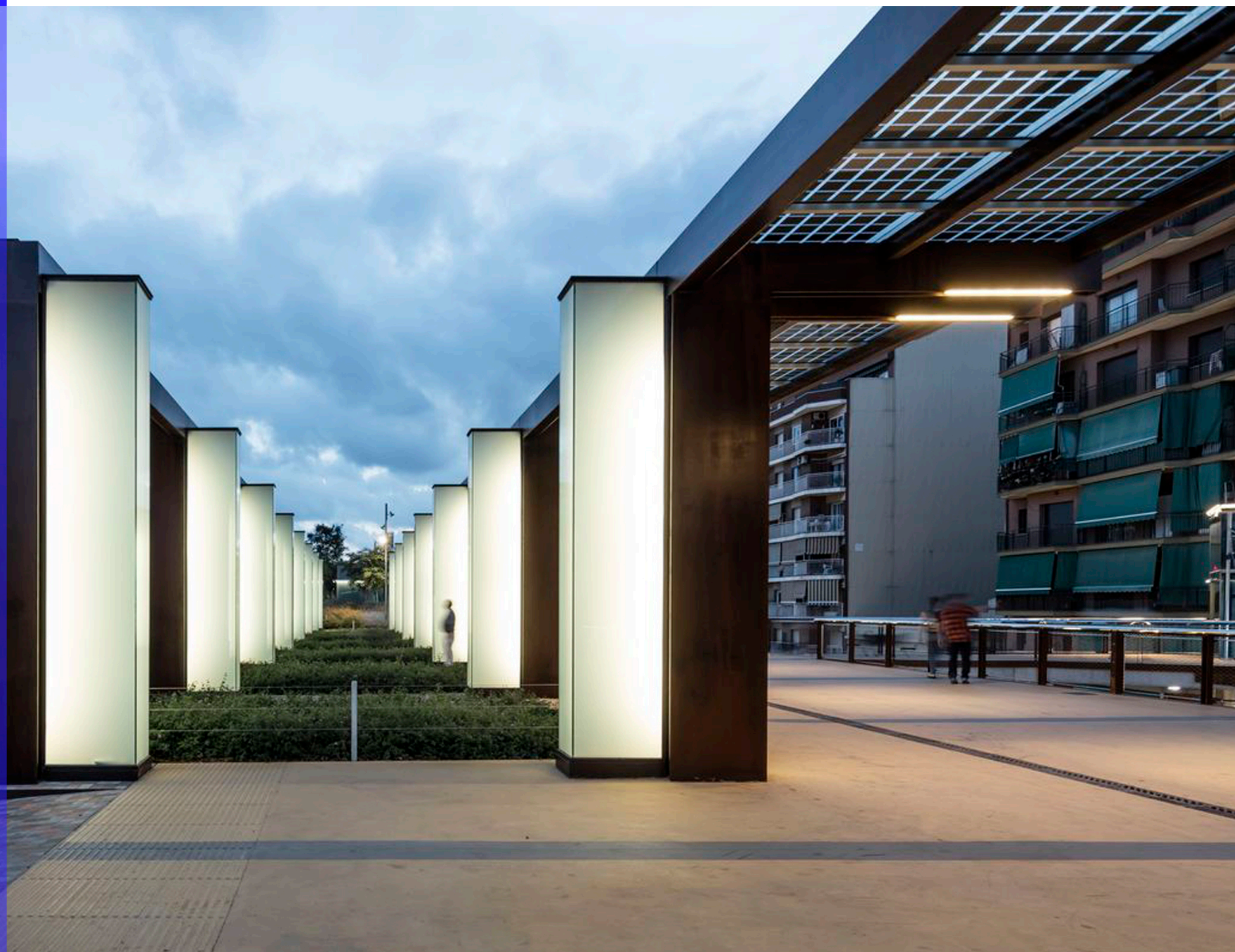
Panel Power: 161 Wp

Panel Power: 111.8 Wp/m²



Total Power: 83,398 Wp

Quantity: 518 pcs

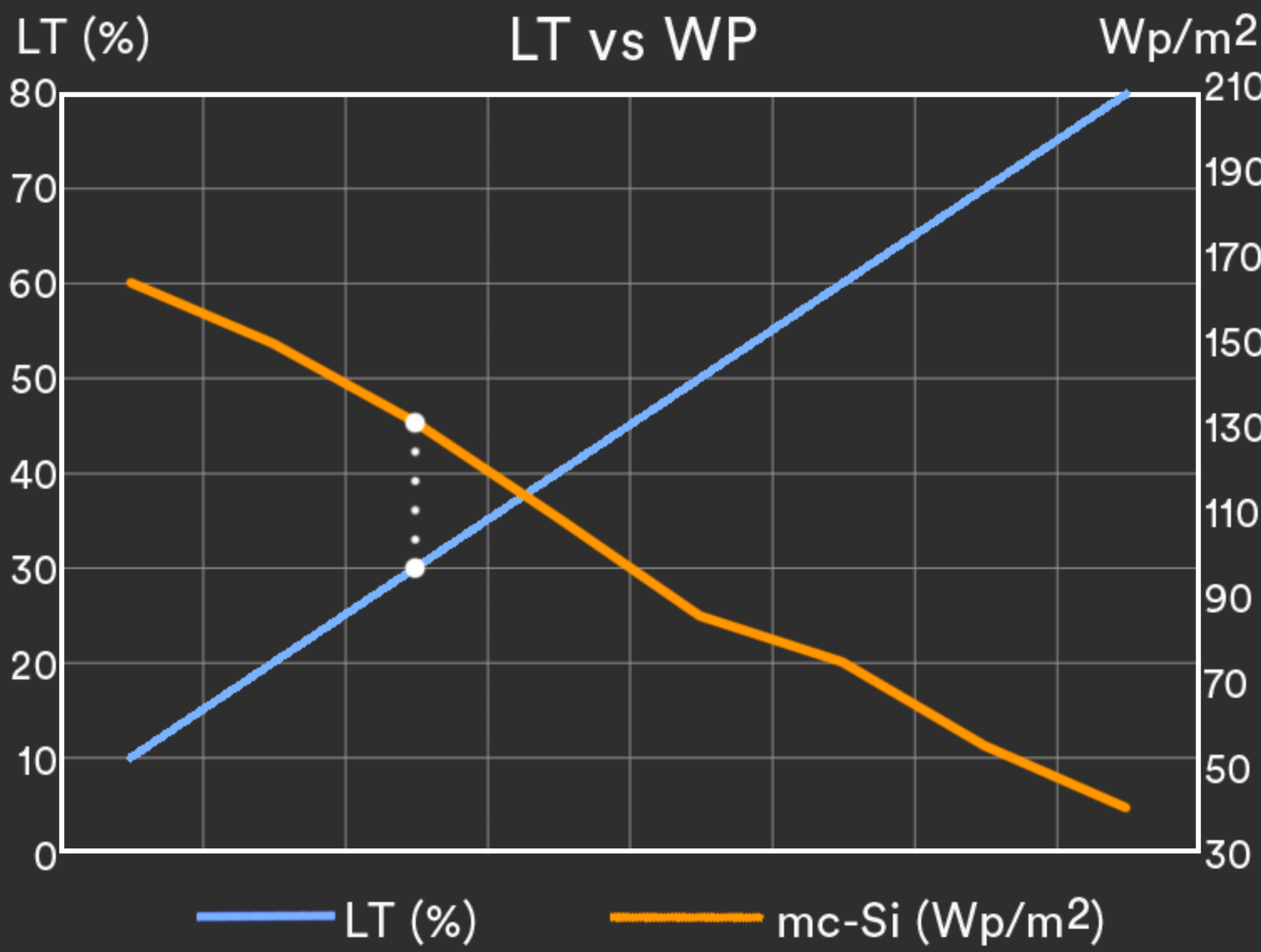
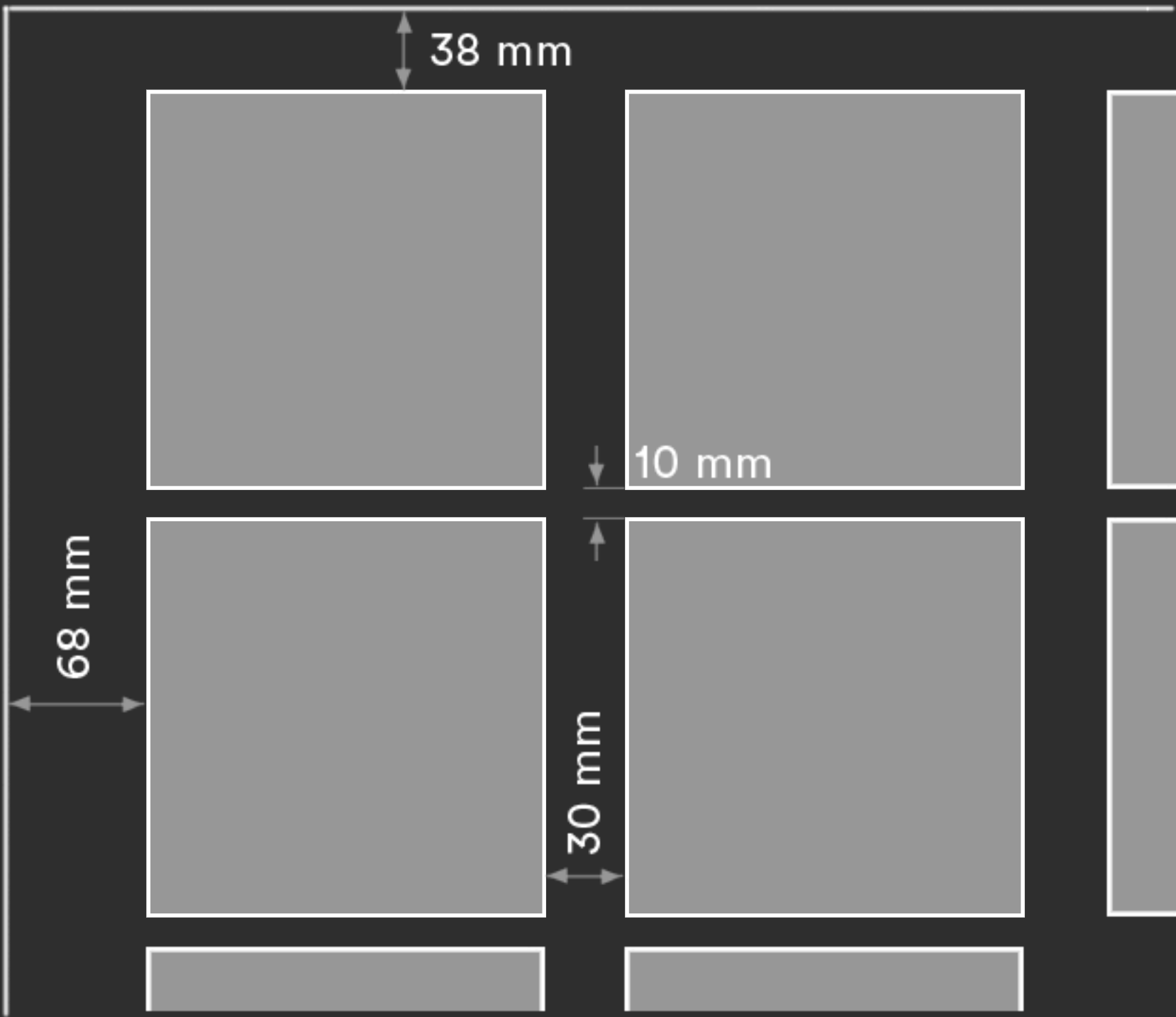


Photovoltaic pergolas are an alternative way to transform materials that are normally used in construction to generate **shades**

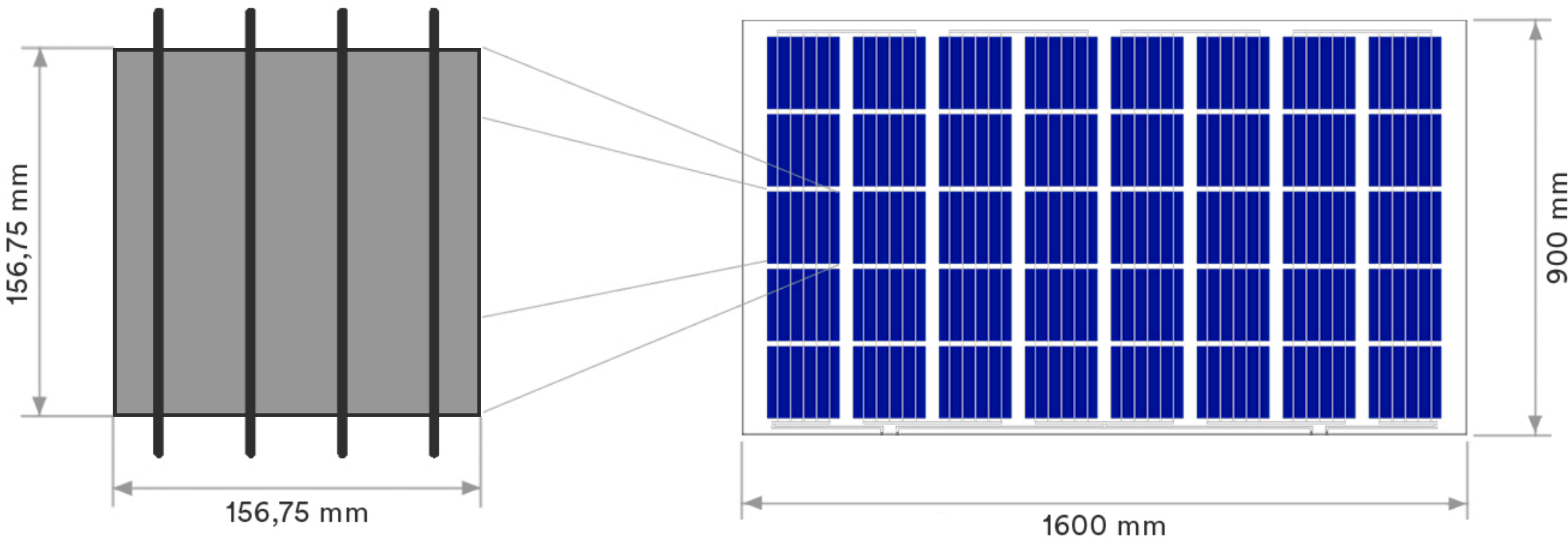


BIPV

One of the great advantages of Solar Innova's architectural integration **photovoltaic** glasses is that they act as a filter for ultraviolet and infrared radiation, both harmful to health, in addition to generating clean and **free energy** thanks to the sun.



SI-ESF-M-BIPV-CT-P156-40



- mc-Si PV
- 4bb connection
- high efficiency

- ✓ Raising awareness by betting on renewable energy
- ✓ Integration of renewable energy in urban environments
- ✓ Advantage of unused areas
- ✓ Amortization of economic investments

+ Energy + Saving - Outlay - CO2

CE

2014/35/EU
EN 50583-1
EN 14449

ISO

ISO 9001
ISO 14001
ISO 45001

IEC

IEC/EN 61215
IEC/EN 61730
IEC/EN 63092

nZEB Nearly
Zero Energy
Buildings

ISO 1064
GHG Protocol

WEEE
2002/96/EC

Fast Return Of
Investment
material

12/25 years
guarantee

Photovoltaic
Architecture

High
satisfaction

Custom
design and
production

Low
degradation